



Newsletter Consumer Price Index (CPI) June 2020



+233-303-932401

info@statsghana.gov.gh

15-July-2020

Summary

- National inflation from June 2019 to June 2020 was 11.2%.
- National month-on-month inflation from May 2020 to June 2020 was 1%.
- Food and Non-Alcoholic Beverages inflation was 13.8% and average Non-Food inflation 9.2%.
- Regional inflation was between 15% in Greater Accra and 4.3% in the Upper West Region.

Government Statistician Says:

"Even though year-on-year inflation (11.2%) is still higher compared to pre-Covid-19 inflation, month-on-month inflation (1%) and month-on-month Food inflation (0.1%) are lower than the previous two months. This indicates that prices did continue to rise, but not as much as the previous two months."

June 2020 Inflation

The national year-on-year inflation rate was 11.2% in June 2020, which is 0.1 percentage points lower than last month (see Table 1). Month-on-month inflation between May 2020 and June 2020 was 1%. This is lower than the 1.7% recorded between April and May and 3.2% between March and April 2020, but higher than the average month-on-month inflation recorded in the months October 2019 to March 2020 (0.7%). Only two of the thirteen Divisions had higher than average inflation rates; Housing, Water, Electricity and Gas (21.3%) and Food and Non-Alcoholic Beverages (13.8%) (see Figure 1).

Table 1: Consumer Price Indices August 2019 to June 2020.

Month	CPI (2018 = 100)	Change (inflation %)	
		Monthly	Yearly
Aug - 2019	108.6	-	7.8
Sep	108.5	0.0	7.6
Oct	109.0	0.4	7.7
Nov	109.7	0.7	8.2
Dec	110.0	0.3	7.9
Jan - 2020	111.6	1.4	7.8
Feb	112.1	0.4	7.8
Mar	113.0	0.8	7.8
Apr	116.6	3.2	10.6
May	118.6	1.7	11.3
June	119.8	1.0	11.2

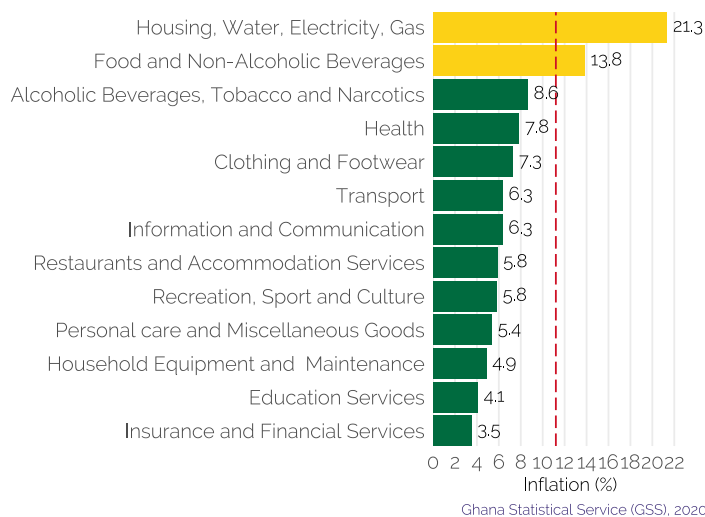


Figure 1: Year-on-year inflation June 2020, by Division. Inflation was highest for the 'Housing, Water, Electricity and Gas' and 'Food and Non-Alcoholic Beverages' Divisions.

Regional Inflation

At the regional level, the overall year-on-year inflation ranged from 4.3% in the Upper West Region and Volta Region to 15.0% in Greater Accra. In all, but Greater Accra, Northern Region, and Upper East, Food inflation was higher than Non-Food Inflation (See Figure 3). Especially in Western Region (21.3% Food inflation compared to 7.4% Non-Food inflation) and Ashanti (20.6% Food inflation and 5.4% Non-Food inflation), we see large differences between the Food and Non-Food inflation.

The overall month-on-month inflation was between -2.2% in the Upper West Region and 2.5% in Greater Accra. Ashanti Region, which saw the highest month-on-month inflation between April and May 2020 (3.9%), had a negative (-0.6%) month-on-month inflation between May and June 2020. Overall, Regions with high month-on-month inflation between April and May 2020, saw lower month-on-month inflation this month, and vice versa. See Figure 5, for the other regional month-on-month inflation rates.

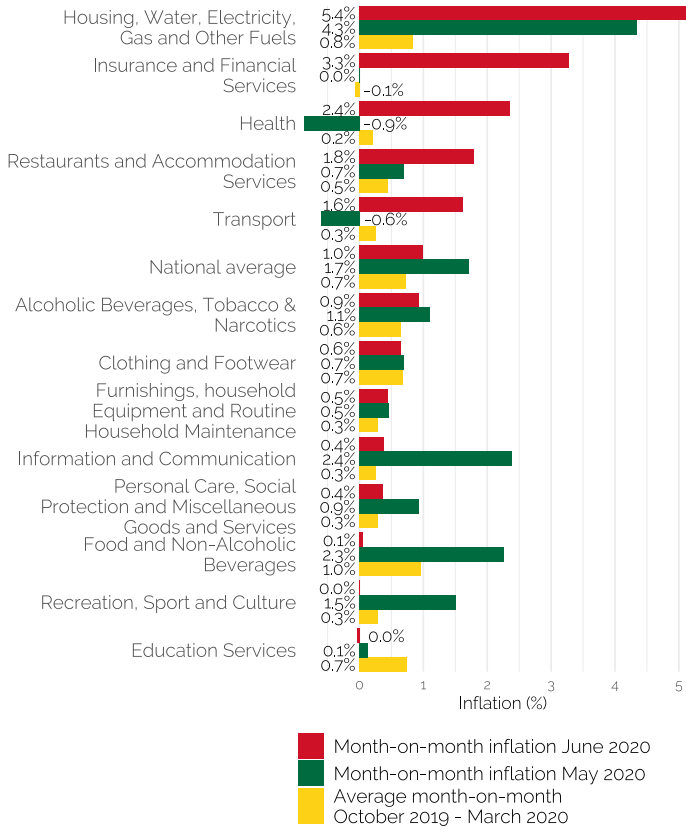


Food and Non-Food Inflation

The Food and Non-Alcoholic Beverages Division recorded a year-on-year inflation rate of 13.8%. This is 1.3 percentage points lower than May 2020 (15.1%), but 5.9 percentage points higher than the average over the eight months preceding March 2020 (7.9%). Within the Food Division, Vegetables (28.8%) and Fruits and Nuts (17.4%) were the Subclasses with the highest rates of inflation (see Figure 4). Month-on-month the inflation for Fruits and Nuts stood at 3.0% while Vegetables recorded a negative inflation of -2.1%.

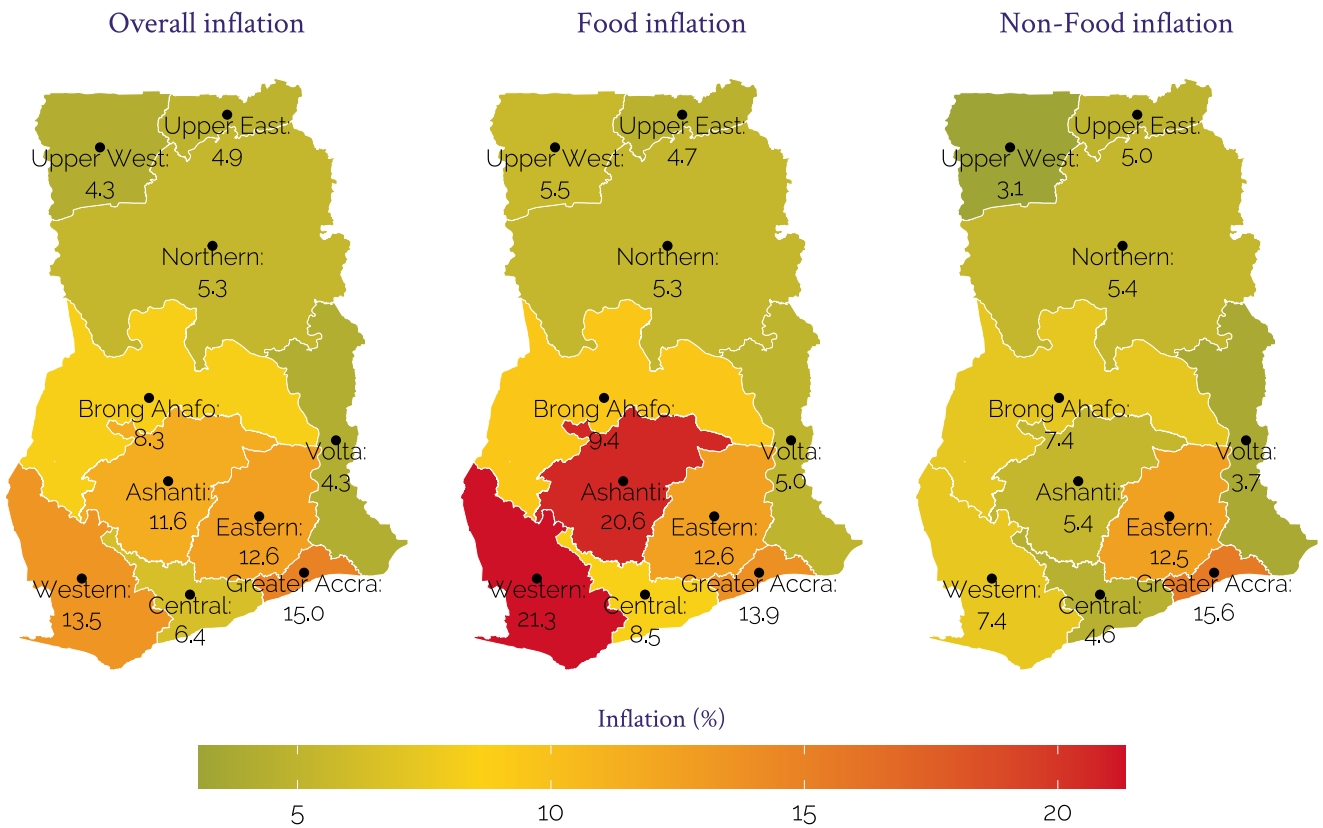
As Food contributed 54.4% to year-on-year inflation, it is still the predominant driver of year-on-year inflation, but it contributed less than the previous two months. Month-on-month Food inflation was 0.1%, which is less than the overall month-on-month inflation and the month-on-month Food inflation in May (2.3%) and April 2020 (6.4%).

Non-food inflation came in at 9.2%, which is higher than the 8.4% measured in May 2020. Like last month, the Division with the highest month-on-month inflation was Housing, Water, Electricity and Gas (5.4%). Compared to earlier months, Housing, Water, Electricity and Gas (20%) also contributed more to year-on-year inflation. This is driven by an increase in Rent prices and inflation for refuse collection (see Figure 6 on the final page). The Non-Food Subclasses with the lowest inflation were Fuels and Lubricants for Personal Transport Equipment (-13.5%), Electricity (-35.6%) and Electric Appliances for Personal Care (-66.9%).



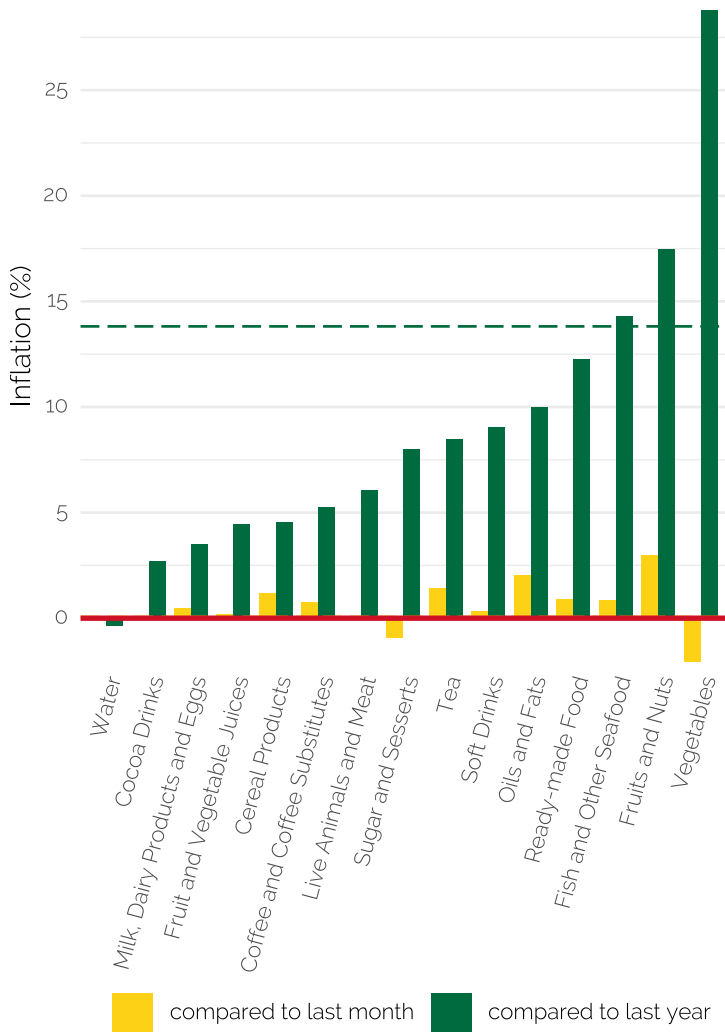
Ghana Statistical Service (GSS), 2020

Figure 2: National month-on-month inflation rates for different Divisions



Ghana Statistical Service (GSS), 2020

Figure 3: Year-on-year overall, Food and Non-Food inflation rates for June 2020 by region.



Imported and Local Inflation

The inflation of imported goods was 4.7%, while the inflation of local goods was 13.9% on average. Month-on-month inflation for imported goods was 0.7%, while month-on-month inflation for local goods was 1.1%. Both of these percentages are lower than the corresponding numbers last month (0.8% for imported and 2.1% for locally produced goods). The main contributor to local inflation was the inflation of locally produced foods.

More Information

Visit the GSS website (www.statsghana.gov.gh) for further information and detailed annexes or contact: Mr. John F.K. Agyaho (Head, Price Statistics, GSS) at john.agyaho@statsghana.gov.gh.

Ghana Statistical Service (GSS), 2020

Figure 4: Year-on-year and month-on-month Food Subclass inflation, June 2020

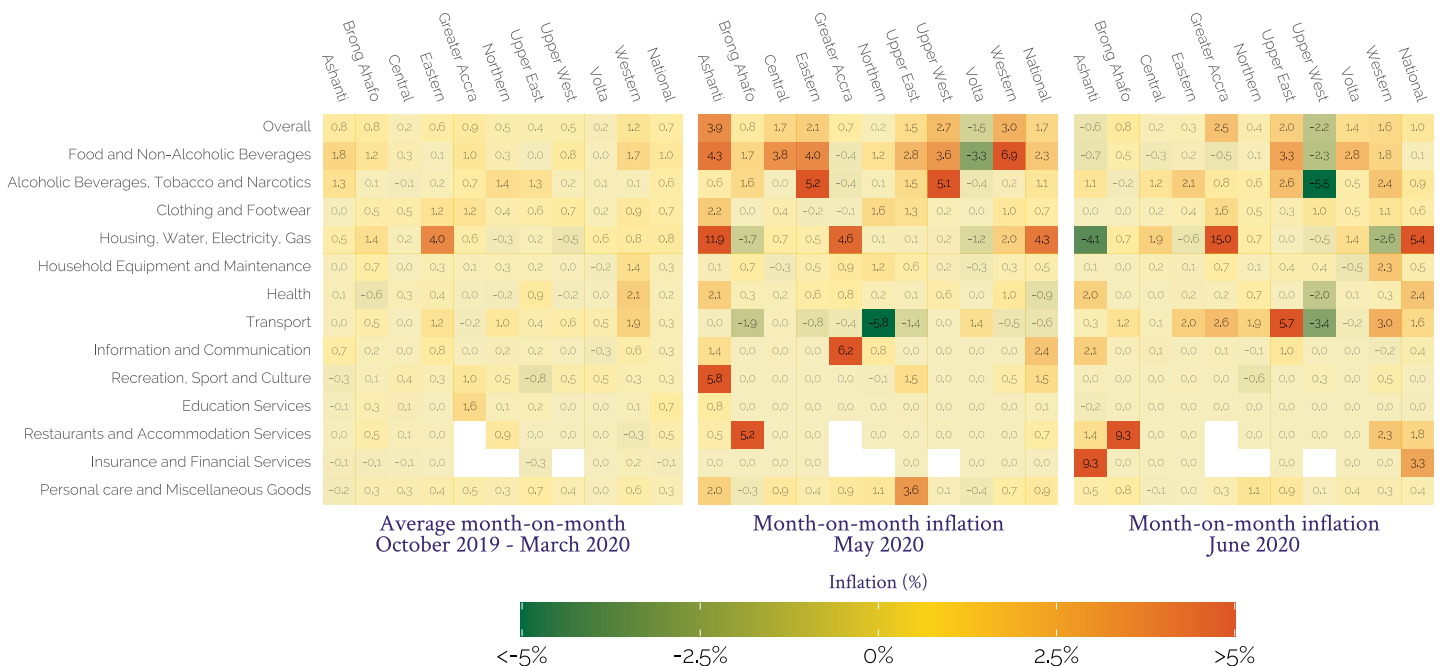
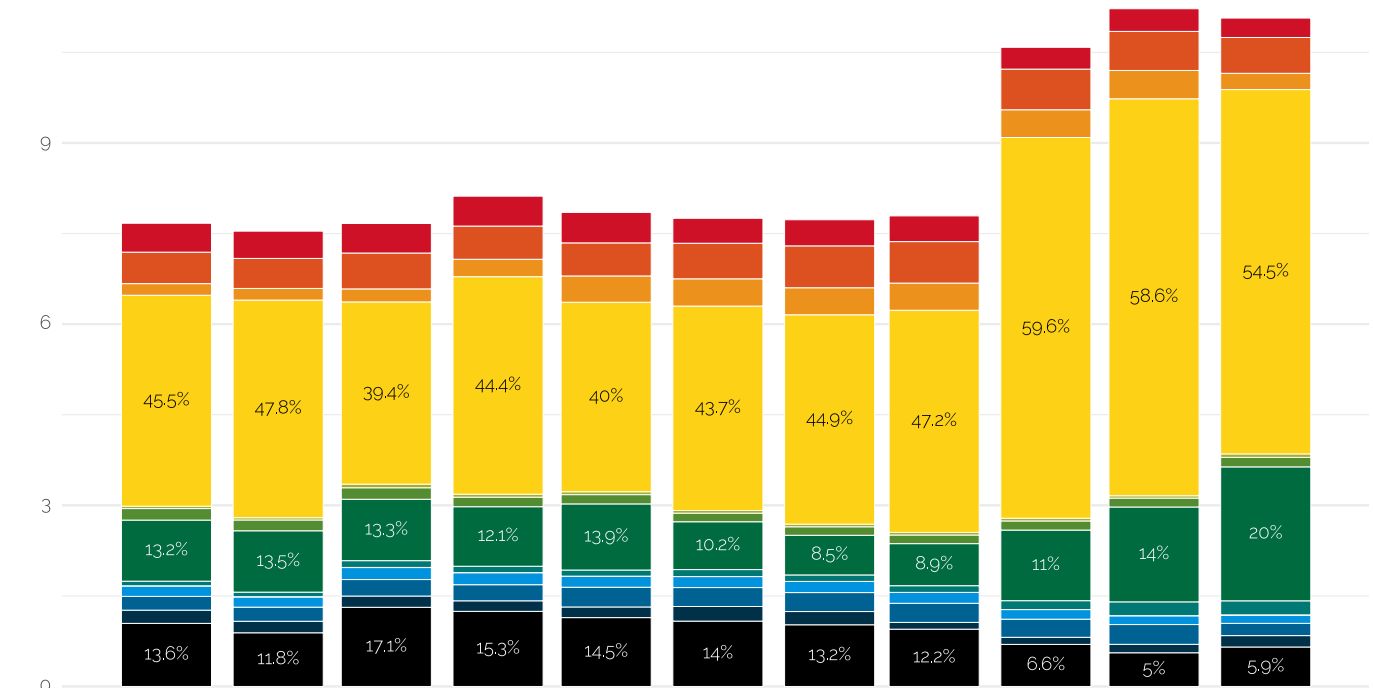


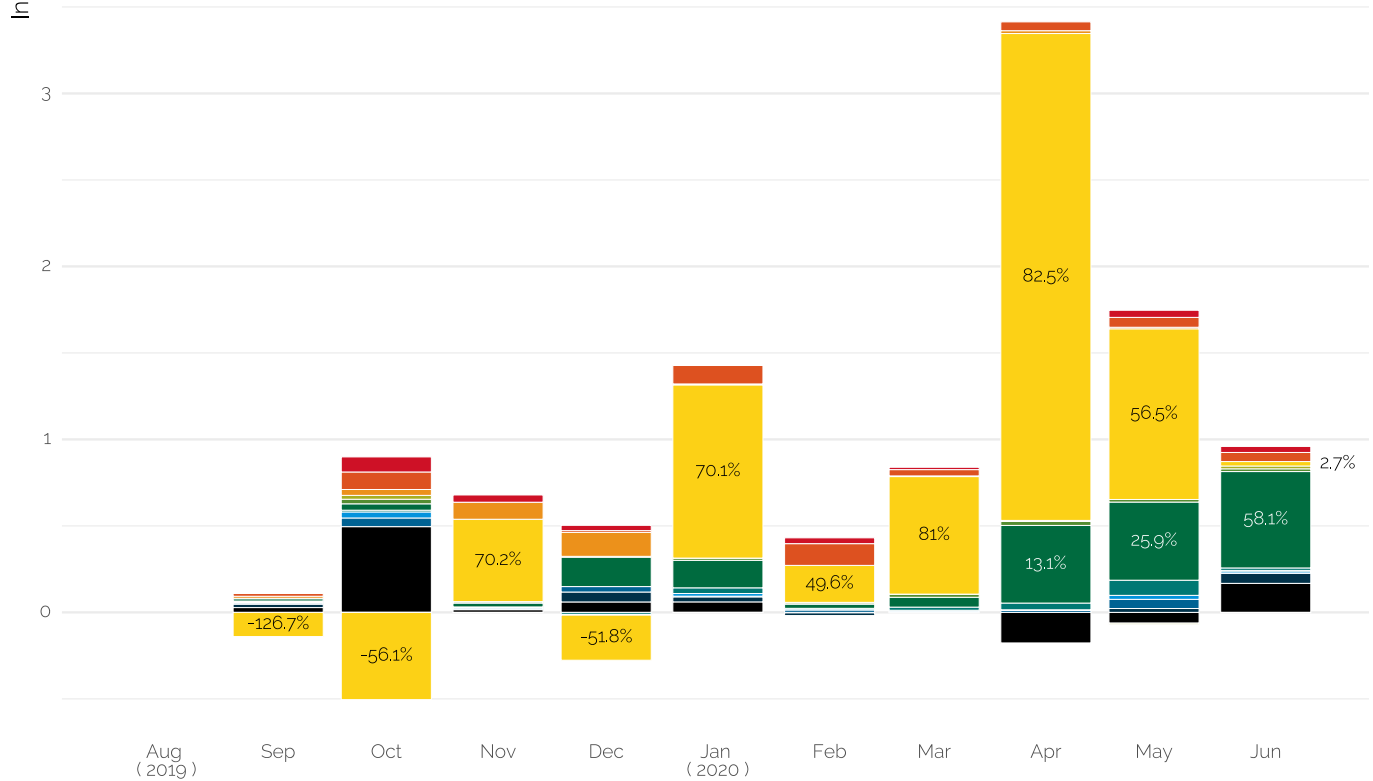
Figure 5: Heatmap tabulating the month-on-month inflation statistics for 10 regions and 13 Divisions in addition to the National and Overall averages. The average of month-on-month inflation for the period October 2019 to March 2020 is given, as well the inflation between April 2020 and May 2020 and the inflation between the May and June 2020.



Year-on-year inflation



Month-on-month inflation



- Divisions**
- Alcoholic Beverages, Tobacco and Narcotics
 - Clothing and Footwear
 - Food and Non-Alcoholic Beverages
 - Health
 - Household Equipment and Maintenance
 - Housing, Water, Electricity, Gas
 - Information and Communication
 - Insurance and Financial Services
 - Personal care and Miscellaneous Goods
 - Recreation, Sport and Culture
 - Restaurants and Accommodation Services
 - Transport

Figure 6: Composition of year-on-year and month-on-month inflation over the last ten months.